

Drawn By:
Teddy Dowling

Scale: 1/4" = 1'-0"

Print Date: 1.4.21

Address:

Dowling Homes, LLC
2346 Oliver Road
Timmonsville, S.C. 29161
Phone: 843-665-2816
teddy@dowlinghomes.co

Floor Space

1st floor: 1343 sqft
2nd floor: 923 sqft
Total Heated: 2266 sqft
Front Porch: 280 sqft
Rear Porch: 140 sqft
Garage: 425 sqft
Total Under Roof: 3111 sqft

Palmetto Pond Cottage

Elevations

Dowling Homes, LLC



Left Elevation



Front Elevation



Rear Elevation



Right Elevation

Drawn By:
Teddy Dowling

Scale: 1/4" = 1'-0"

Print Date: 1.4.21

Address:

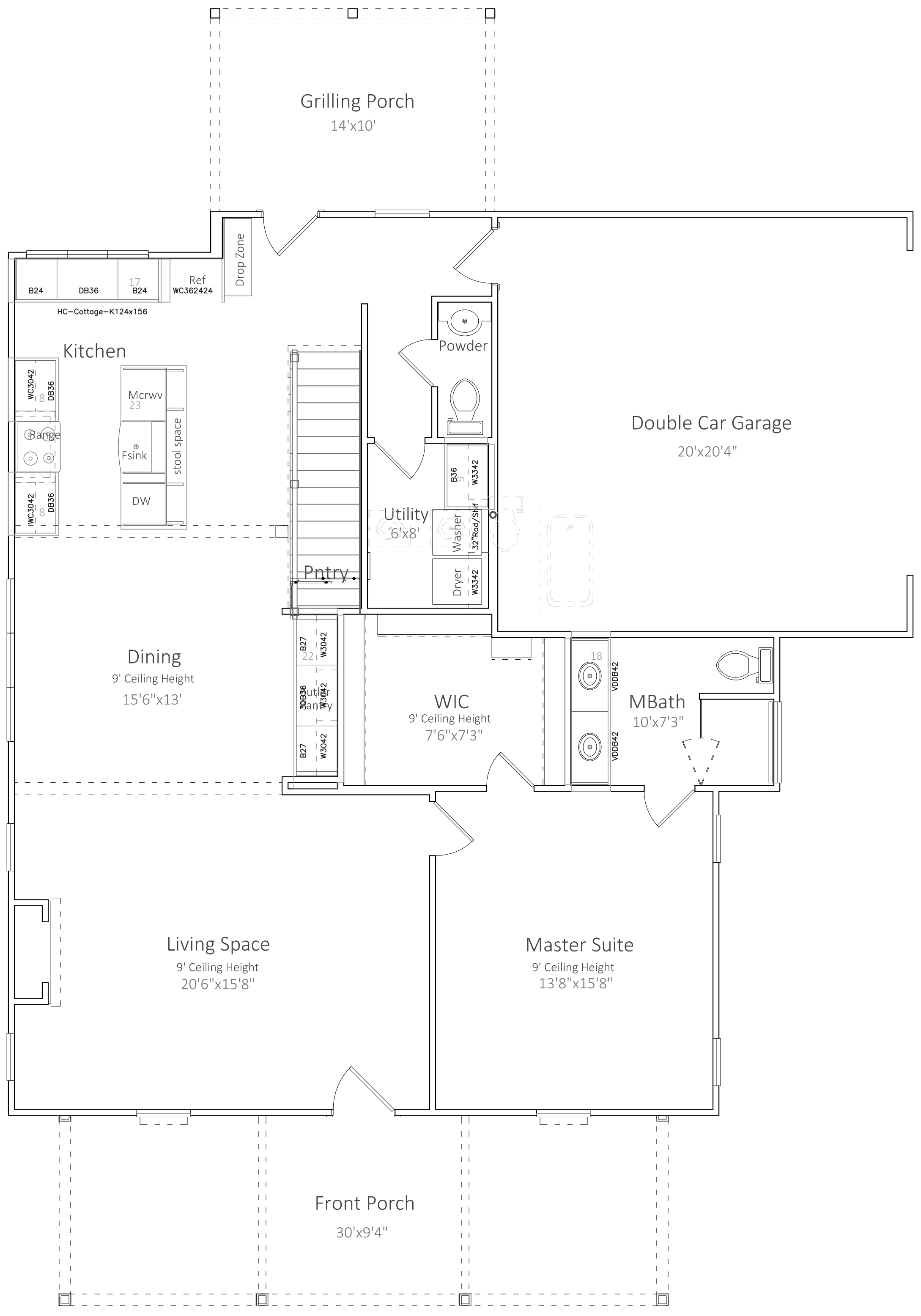
Dowling Homes, LLC
2346 Oliver Road
Timmonsville, S.C. 29161
Phone: 843-665-2816
teddy@dowlinghomes.co

Palmetto Pond Cottage

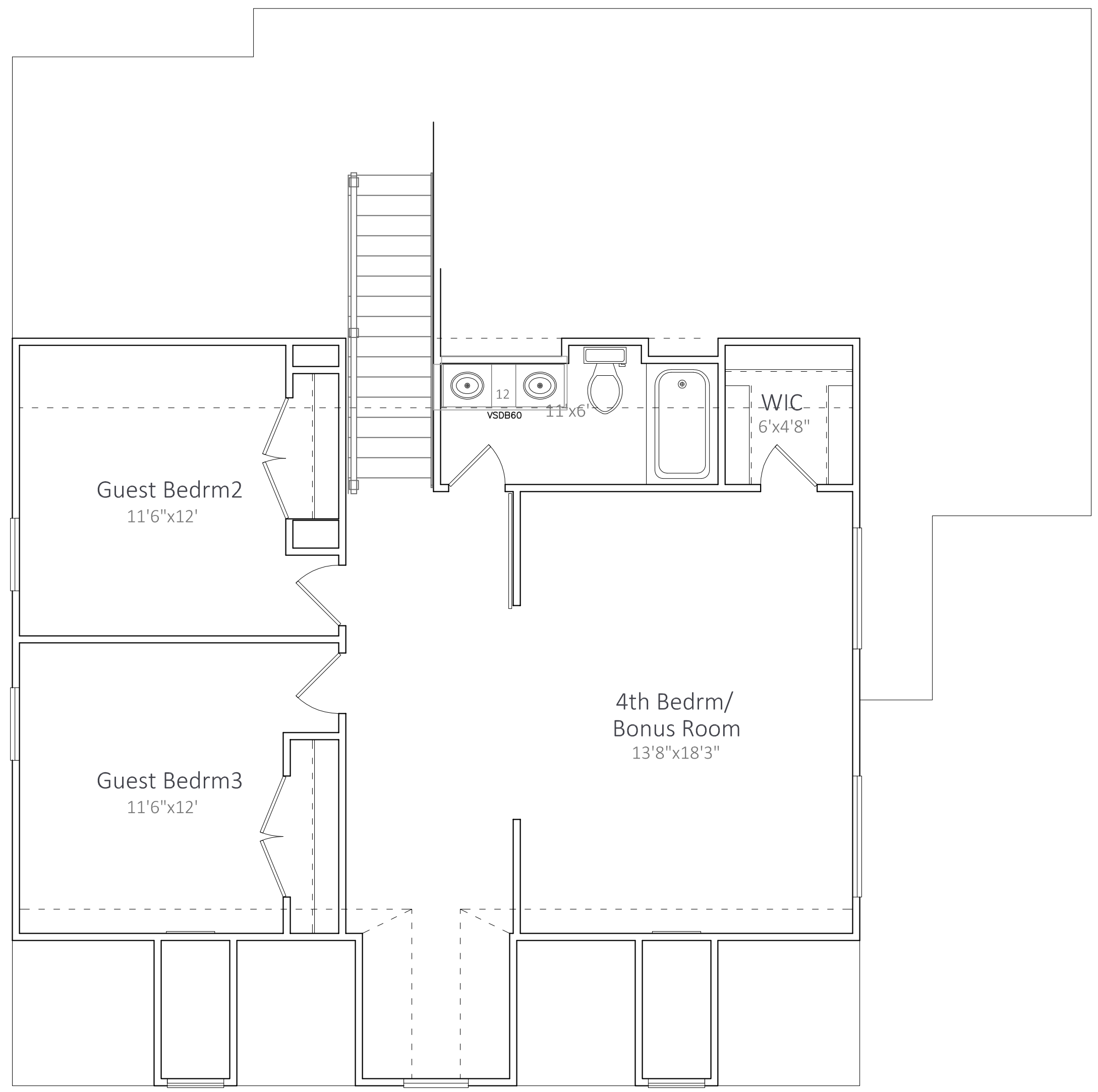
Plan View

Dowling Homes, LLC

Floor Space
1st floor: 1343 sqft
2nd floor: 923 sqft
Total Heated: 2266 sqft
Front Porch: 280 sqft
Rear Porch: 140 sqft
Garage: 425 sqft
Total Under Roof: 3111 sqft



Main Level
1343 sqft



Upper Level
923 sqft