

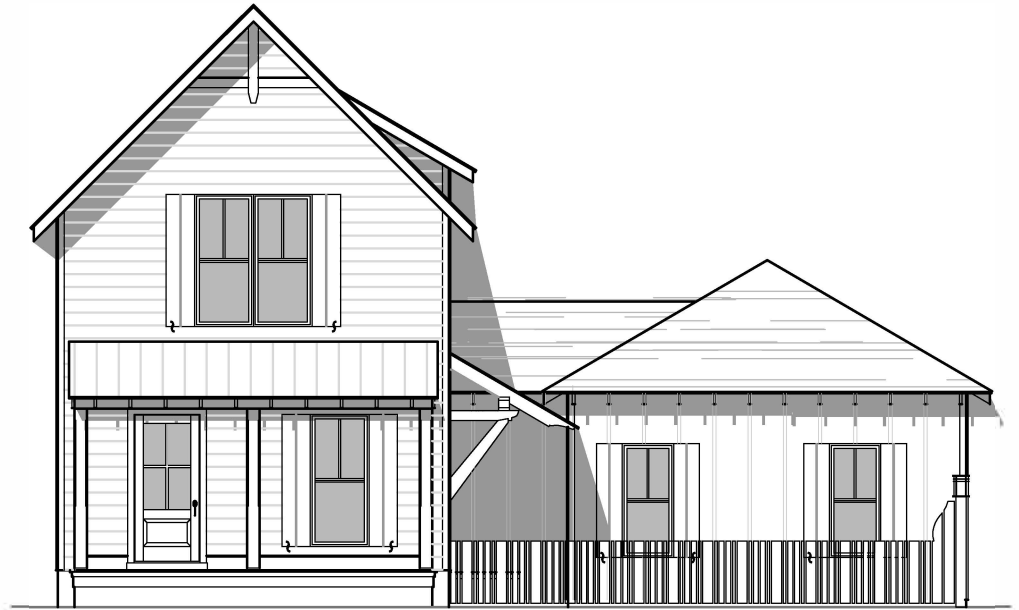
Dowling Homes

717 Belle Rive

"Create a Home to Retreat"

HIGHLIGHTS

1. 1650 SQUARE FEET
2. 3 BEDROOM
3. 2.5 BATHROOMS
4. Handi cap master suite inc "roll in tile shower"
5. Open living space
6. Modern open staircase
7. Authentic outside details including, wood ceilings, open rafter tails, operable cypress shutters, shake shingles and brackets.
8. High end cabinets including custom built island
9. Natural stone counter tops throughout



Front Elevation

"Create a Home to Retreat" at 717 Belle Rive located in beautiful South Island Plantation on Winyah Bay. This home design was inspired by the Charleston Single House. These houses are long, narrow designs which allow for every room to have plenty of windows that supply natural daylight and cross breezes.

HOME DIMENSIONS

Width: 61' Depth: 72'

Ceiling Height(s): 10' Family Rm; 9' Throughout downstairs; 9' front bedroom and hall upstairs; 8' other bedrooms.

OTHER ELEVATIONS

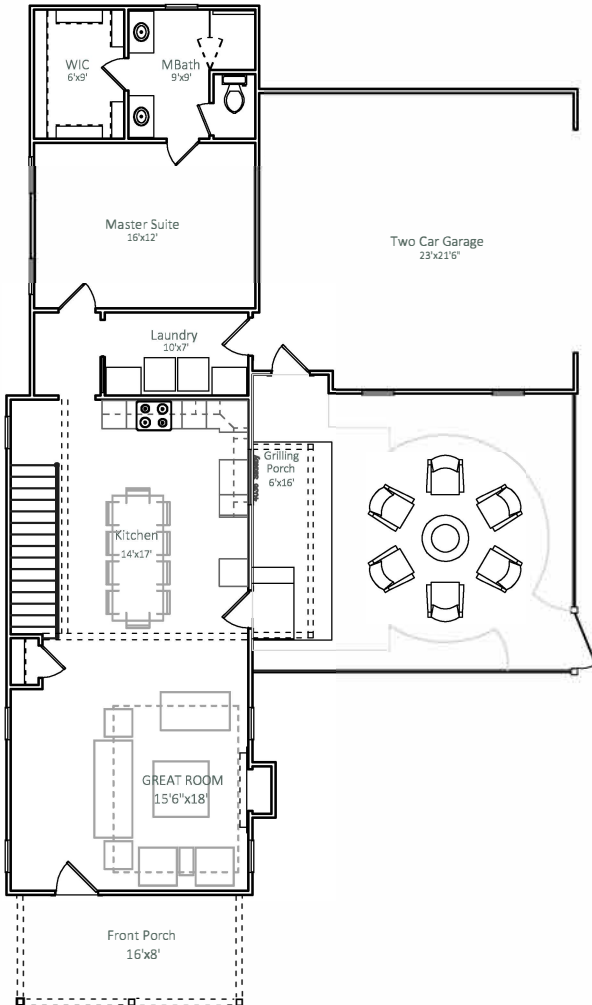


Side Elevation

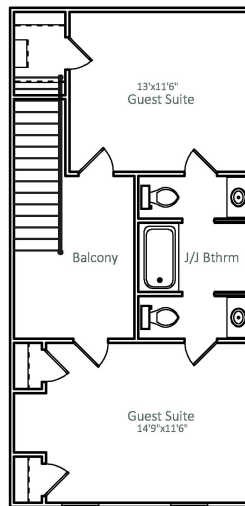


Rear Elevation

FLOOR PLAN



MAIN FLOOR
1105 S.F.



UPPER FLOOR
637 S.F.

ARCHITECTURAL DETAILS

EXTERIOR

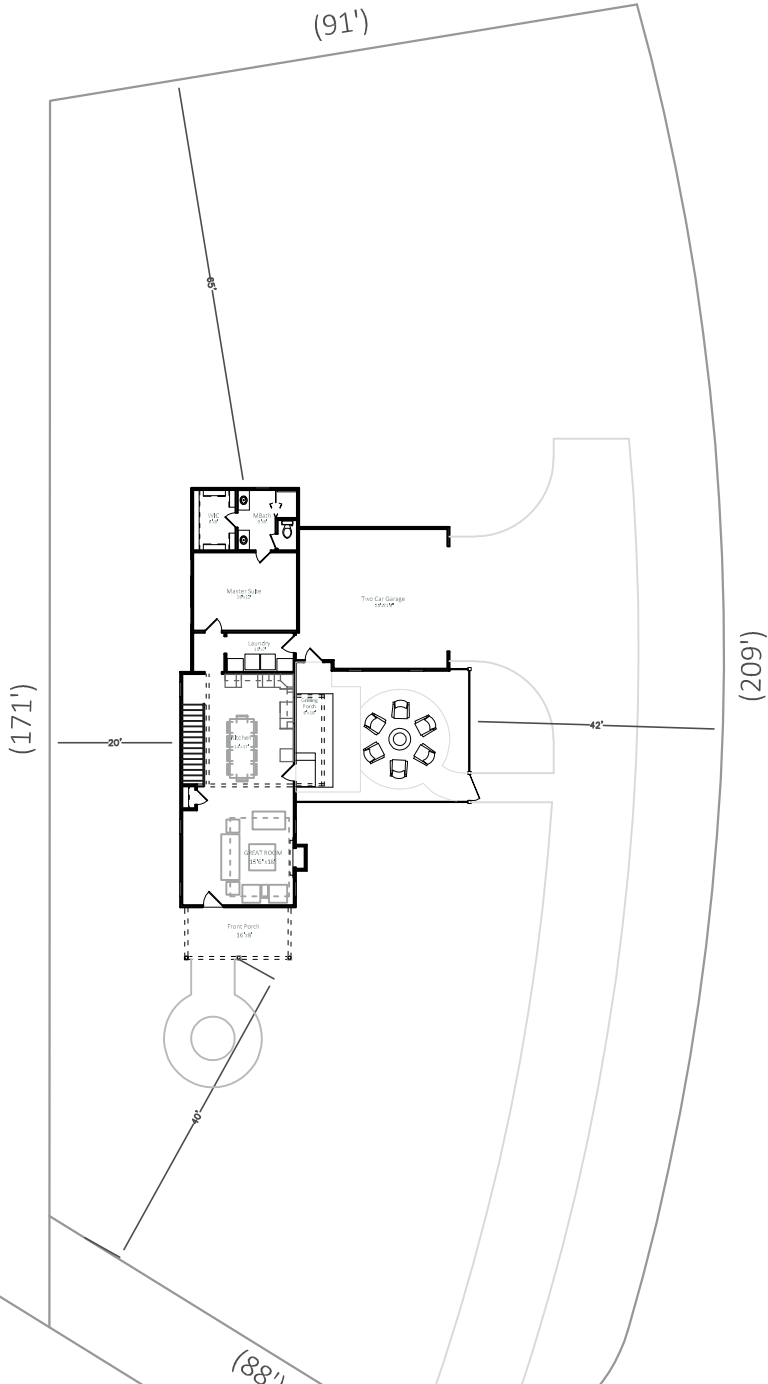
- Casual exterior with open rafter tails, well blended veneers and appropriate proportions
- Chamfered treated select wood columns with open brackets
- Timeless grille pattern
- Grilling porch with Garden
- Inviting front porch with brick pavers floor and stained pine ceiling

INTERIOR

- Handi cap master suite inc. "roll in tile shower" with linear drain
- 9' ceiling heights
- High end cabinets including custom built island
- Handsome columns and beams to create an open living space
- Wood ceiling in Great Room & Kitchen

Dowling
Homes

SITE PLAN LOT 10



Belle River

Plantation Blvd

**Dowling
Homes**