

Dowling Homes

508 Oaklawn

"Welcome Home"

HIGHLIGHTS

1. 2154 SQUARE FEET
2. 3 BEDROOM
3. 3.5 BATHROOMS
4. Handi cap master suite inc "Large roll in tile shower"
5. Open living space
6. Mudroom drop zone
7. Authentic outside details including, wood ceilings, open rafter tails, operable cypress shutters, shake shingles and brackets.
8. High end cabinets including custom built island
9. Natural stone counter tops throughout



"Welcome Home" at 508 Oaklawn Road located in beautiful South Island Plantation on Winyah Bay. This home is design and crafted for comfortable living with many gracious amenities. You will enjoy the beauty of this home and that of South Island Plantation.

HOME DIMENSIONS

Width: 40' Depth: 66' 8"

Ceiling Height(s): 9' Throughout downstairs; 8' upstairs

OTHER ELEVATIONS

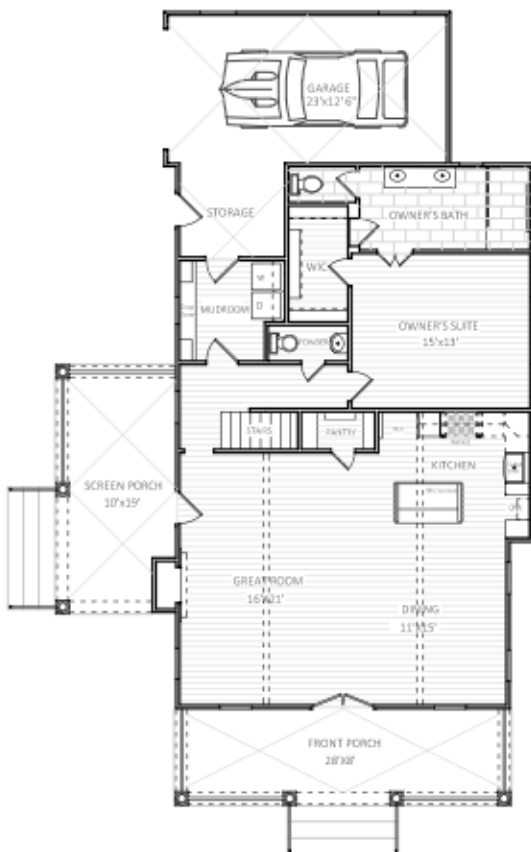


Side Elevation

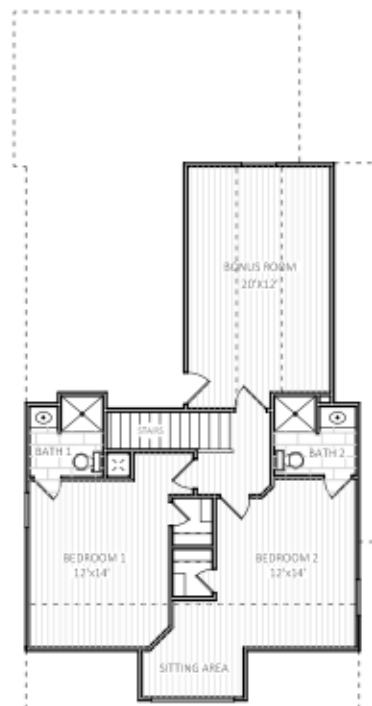


Rear Elevation

FLOOR PLAN



MAIN FLOOR
1274 S.F.



UPPER FLOOR
880 S.F.

ARCHITECTURAL DETAILS

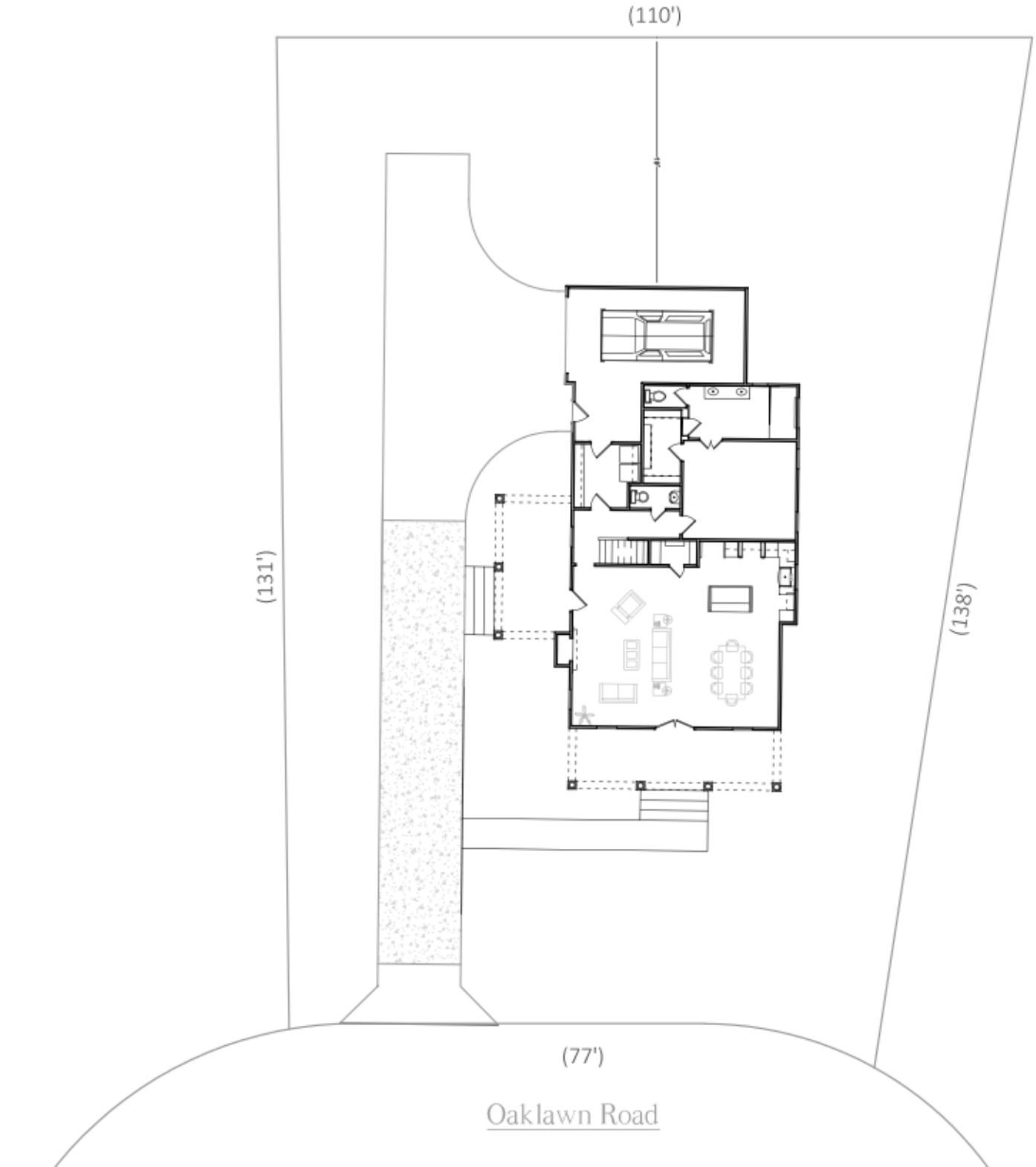
EXTERIOR

- Casual exterior with open rafter tails, well blended veneers and appropriate proportions
- Chamfered treated select wood columns with open brackets
- Timeless grille pattern
- Grilling porch with Garden
- Inviting front porch with "x" rails and stained floors

INTERIOR

- Handi cap master suite inc. "roll in tile shower" with linear drain
- 9' ceiling heights
- High end cabinets including custom built island
- Handsome beams to create an open living space
- Fireplace with gas logs

Dowling
Homes



**Dowling
Homes**