

Dowling Homes

17 Monterey Drive

"Come Home at 17 Monterey Drive"

HIGHLIGHTS

1. 2560 SQUARE FEET
2. 4 BEDROOM
3. 3 BATHROOMS
4. Handi cap master suite inc "Large roll in tile shower"
5. Open living space
6. Butler Pantry
7. Authentic outside details including, wood ceilings, open rafter tails, operable shutters, metal roofing and brackets.
8. High end cabinets including custom built island
9. Natural stone counter tops throughout



"Come Home at 17 Monterey Drive" in beautiful Westbrook Subdivision.

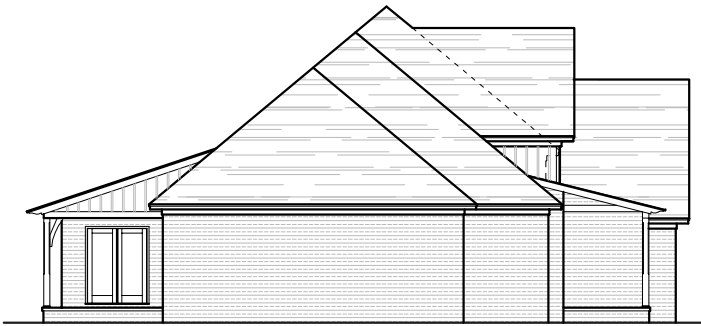
This home is designed and crafted for comfortable living with many gracious amenities. You will enjoy the beauty of this home and that of Traces Golf Course. Come Home.....

HOME DIMENSIONS

Width: 62' 8" Depth: 56' 4"

Ceiling Height(s): 9' Throughout

OTHER ELEVATIONS

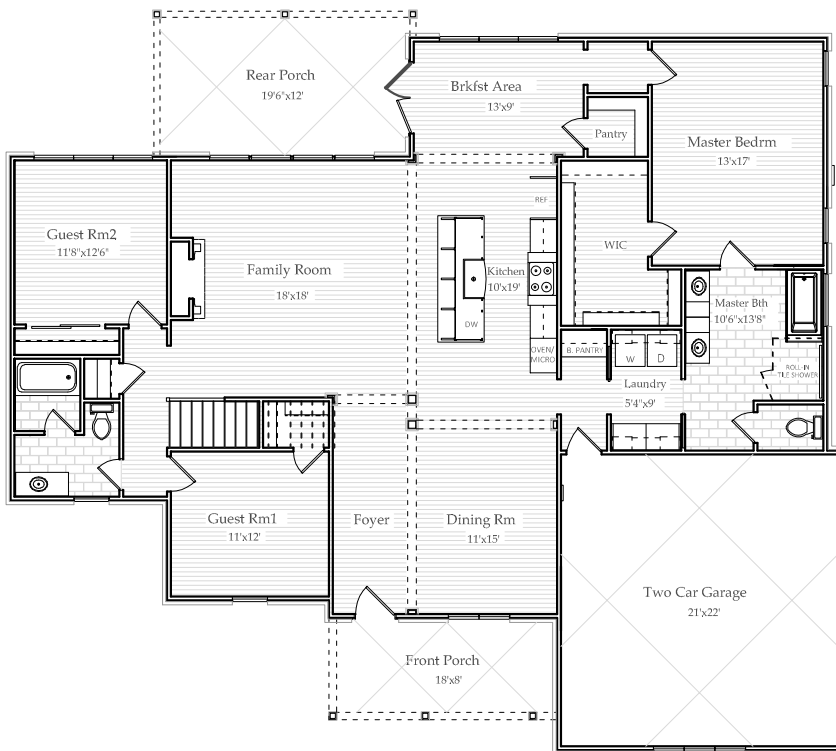


Side Elevation

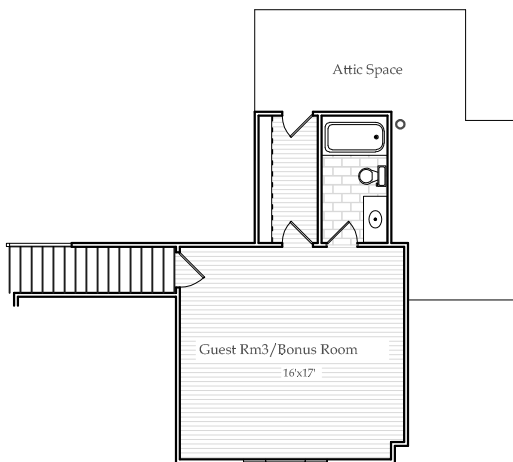


Rear Elevation

FLOOR PLAN



MAIN FLOOR
2100 S.F.



UPPER FLOOR
460 S.F.

ARCHITECTURAL DETAILS

EXTERIOR

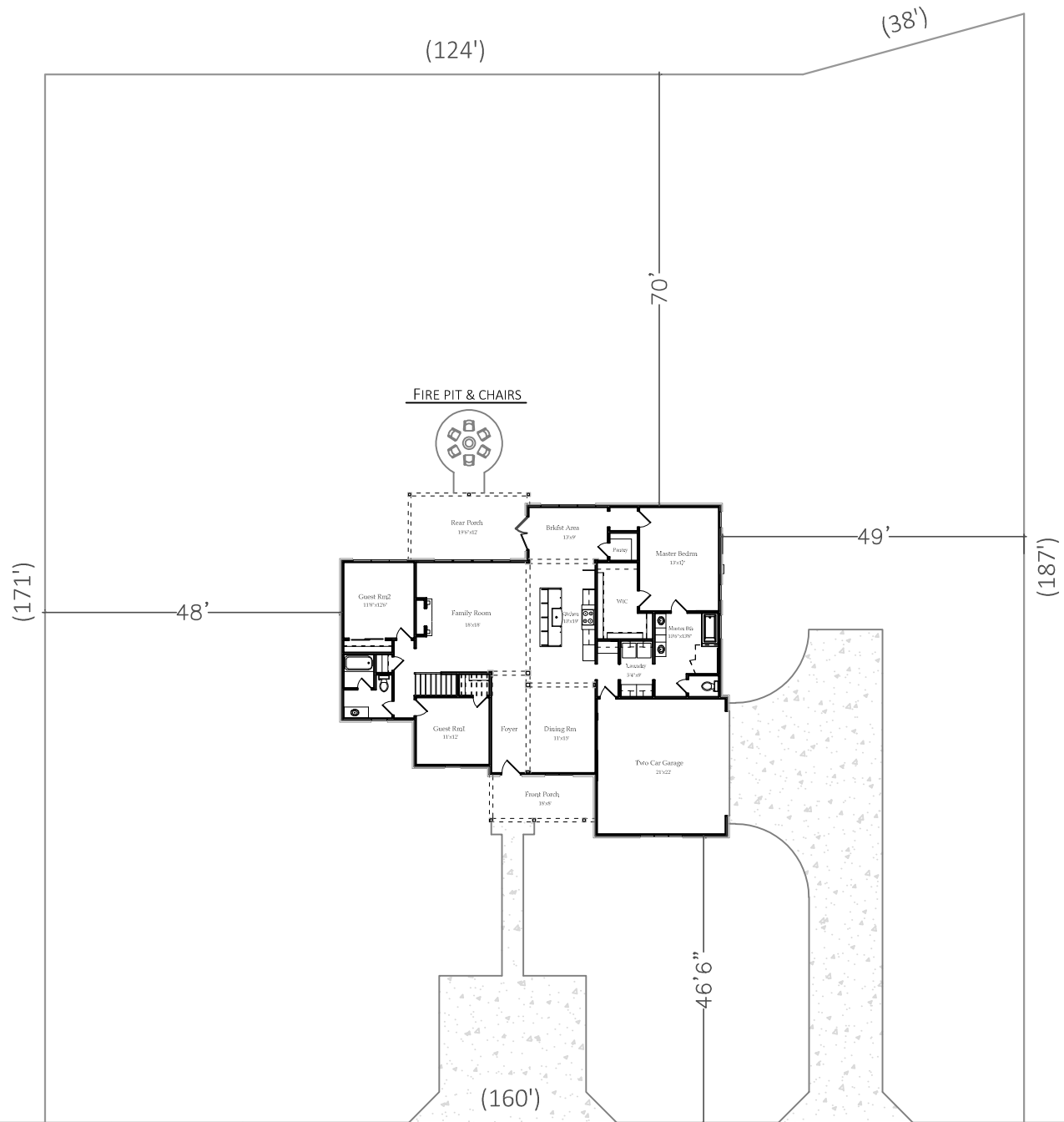
- Casual exterior with open rafter tails, well blended veneers and appropriate proportions
- Chamfered treated select wood columns with open brackets
- Timeless grille pattern
- Large rear porch with golf coarse view
- Inviting front porch with handsome detailing

INTERIOR

- Handi cap master suite inc. "roll in tile shower" with linear drain
- 9' ceiling heights
- High end cabinets including custom built island
- Handsome beams & Columns to create an open living space
- Fireplace with gas logs

Dowling
Homes

SITE PLAN Lot 17



Monterey Drive

**Dowling
Homes**